

MCV

Vertical machining centre

1400 QUICK



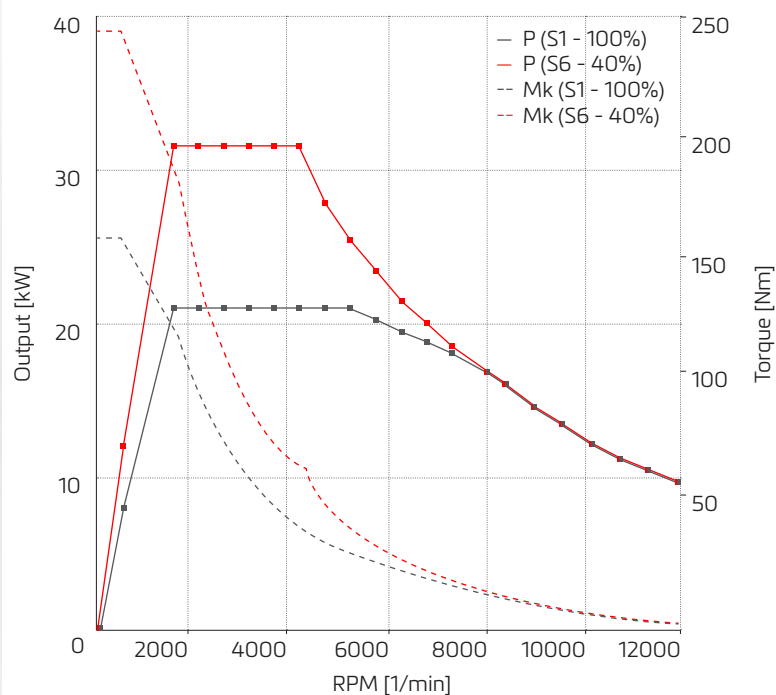
KOVOSVIT MAS
machine your future



MCV 1400 QUICK

- X / Y / Z - 1400 / 650 / 750 mm
- Table clamping surface: 1 600 x 650 mm
- Max. loading of table: 1 250 Kg
- Max. RPM: 12 000 min⁻¹
- Rollers linear guide at Z axis - increase rigidity
- Direct linear scales at each axis
- Up to 40 tools ATC
- Screw chip conveyor - output both sides SDT
Cell chip conveyor - output both sides CDT

Spindle: 12 000 ot/min

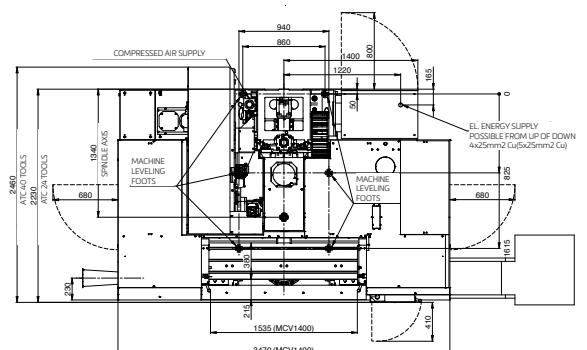
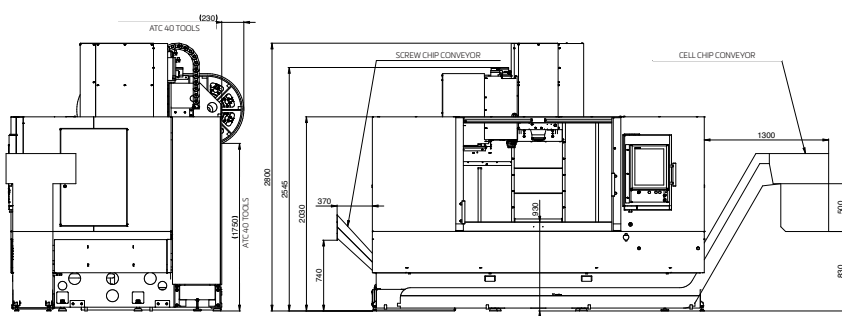


Technical parameters

Working range	Table clamping surface	mm	1600x650
	T slots number		5
	X axis	mm	1400
	Y axis	mm	650
	Z axis	mm	750
	Max. weight on table	kg	1250
	Distance from spindle nose to table clamping surface	mm	100 - 850
Spindle	Spindle taper		ISO 40 (7:24) – ISO 7388/1
	Max. speed	1/min	0 - 12 000
	Spindle drive		belt / transfer 1:1
	Spindle output (S1/S6-40%)	kW	21,5 / 32,3
	Spindle torque (S1/S6-40%)	Nm	157 / 236
Feed rate	Measuring X,Y,Z (producer Heidenhain)		Direct (linear scales)
	Rapid traverse	m/min	30
	Working feed rate	m/min	0 - 16
Machine dimension	Length	mm	2230* (ATC 24 tools) 2460* (ATC 40 tools)
	Width	mm	3470
	High	mm	2 800
	Weight	kg	6200
Electric connection	Max. machine working input	kVA	40
Control system	Heidenhain TNC 620		

* without hand gun and manual rinsing

		drum	chain	
Tool magazine	Magazine capacity	24	40	
	Max. tool diameter	Each station occupied	80	80
		Adjacent station empty	120	125
	Max. tool length	mm	350	300
	Max. tool weight	kg	8	8
	Max. weight of all tools at ATC	kg	110	160
	Tool change time	s	3	3
Chip conveyor	Type	SDT screw	CDT cell	



KOVOSVIT MAS
machine your future

KOVOSVIT MAS MACHINE TOOLS, a.s.

náměstí Tomáše Bati 419 | 391 02 | Sezimovo Ústí
Czech Republic

+420 381 632 202

sale_cz@kovosvit.cz

/kovosvit.mas

www.kovosvit.cz

MAS service center: +420 381 74 74 74